

# TV PLUS COSHIP BOX RESCAN INSTRUCTIONS

This is a simple step by step process on how to rescan the channels with the TV Plus COSHIP Set top box to receive more TV Plus Channels on the TV Plus Satellite.



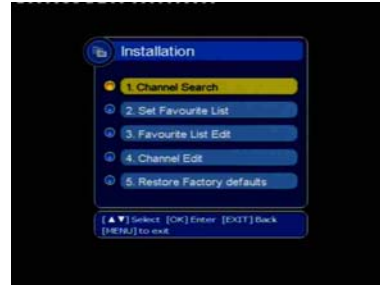
1) If you are getting a message **E16 Service Scrambled** or are looking for more channels.



2) Press "Menu" on the Remote and then Press ok when the **Installation** is highlighted



3) You will then be asked to **Input password** Press "5302" or the installer supplied password "0000"



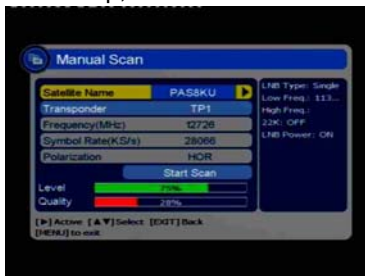
4) You are now in the **Installation Menu** Press "Channel Search"



5) The Following "Channel Search" screen will come up, make sure PAS8 is highlighted yellow



6) Press OK on your remote and you will get a small magnifying glass come beside the PAS8



7) Press the BLUE button on the Remote Control to start the Manual Scan the TV Plus satellite.



8) Using the arrow button on the remote control move down to the "Start Scan" and then press "OK"



9) The box will finish scanning the satellite and it will say "Channel Scan Finished" and the channels will appear on.

If you have any problems, questions or queries please call TV Plus Customer Services on 1800 888 088

